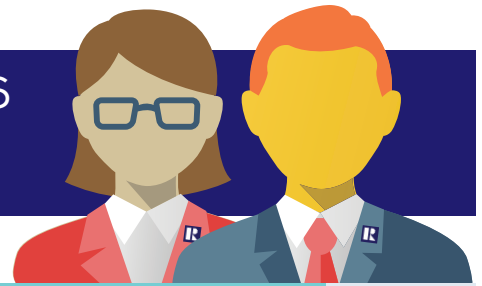


MARKET ONE SHEET February 2016

PROVIDES A QUICK OVERVIEW OF MA MARKET & TRENDS



MARKET ANALYSIS

- Most closed sales in the month of February since 2004
- February median home prices are down compared to same time last year
- The low inventory trend continued in February

REALTOR® CONFIDENCE INDEXES

	FEB. 2015	FEB. 2016
MARKET	54.48	68.66
PRICE	76.35	75.70

Based on a scale of zero to 100

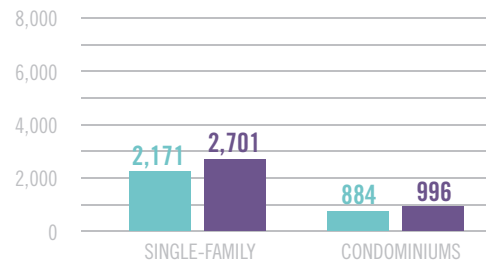
PENDING HOME SALES



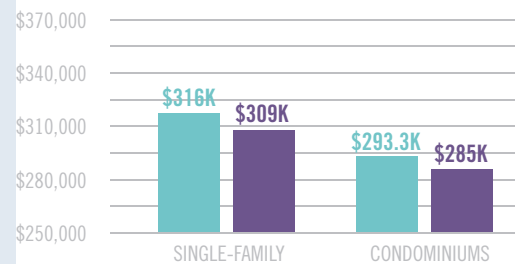
	FEB. 2015	FEB. 2016
SINGLE-FAMILY		
SALES	2,578	4,531
MEDIAN PRICE	\$316,000	\$308,750
CONDOMINIUMS		
SALES	1,118	1,809
MEDIAN PRICE	\$293,250	\$285,000

CLOSED SALES

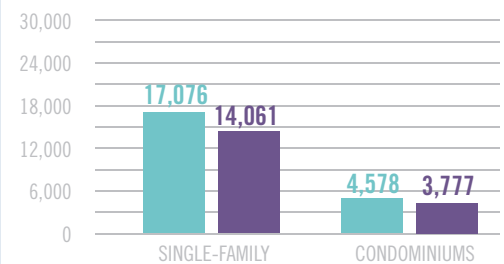
SALES



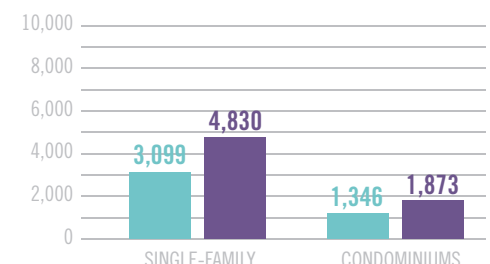
MEDIAN PRICE



INVENTORY



NEW LISTINGS



■ FEB. '15 ■ FEB. '16



MASSACHUSETTS ASSOCIATION OF REALTORS®

